

# HEALTHCARE INTELLIGENT AUTOMATIONS



RPA SaaS Provider

Document triage	Patient access	Pharmacy/supply chain	Consultation and care	Nurse/doctor staffing	Revenue cycle management	Asset management	Provider services
Channel intake	Patient enrollment	Fulfillment	Value based care	Scheduling	Billing/claim submission	Logistics	EMR
Data entry	Insurance verification	Patient profile	Case management	Billing	Cash application	Inventory management	Referral management
Barcode/scan	Document intake	Compliance and controls	Utilization management		Denial/appeal management	Replacements	
Indexing	Benefit verification	DUR review	Clinical analytics		Reconciliation	Service/repair	
	Prior authorization	Order management	Health and wellness		Adjustments/write off		
	Scheduling	Inventory management	Nutritional management		Adjudication		
	Financial planning				Medical coding		
					Patient Pay		

## HOW WE DO IT OVERVIEW

- Our team will convert your automations almost seamlessly from one code structure to UiPath.
- We'll host and support your automations with our Full Lifecycle Managed Services Platform.
- Apply our BA/PM teams to further streamline your automation processes for stability and scalability.
- Set yourself up for further success with our Customer Success team who can work with you to discover new automations, give you insights into new technologies and introduce you to our best in breed partnerships to solve your most challenging automation needs.

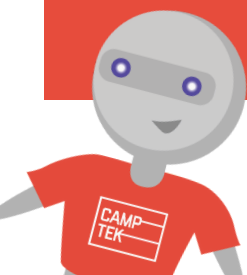
Figure 1: Magic Quadrant for Robotic Process Automation



## CASE STUDY

In less than 4 months, our teams turned around 50 automations for a large healthcare provider with over 300 physical locations. We took abandoned business critical automations built on Olive's proprietary code and streamlined, redesigned and redeveloped on UiPath to launch stable supported automations. The teams had their automations back up and running in no time at all have started to scale while feeling at ease knowing that they are supported with us 24/7/365.

These automations are estimated to see an almost immediate annual return of 10 - 15 million dollars.



WWW.CAMPTEKSOFTWARE.COM



UiPath Certified  
PROFESSIONAL SERVICES

# A PARTNERSHIP BUILT ON SUPPORT



RPA SaaS Provider



## WHO ARE WE OVERVIEW

CampTek Software is a Full-Life-Cycle Intelligent Automation SaaS Provider with proven results implementing and supporting automation solutions through our successful methodology. Our unique hosted model offers many powerful advantages including a shorter time to market, 24/7 support and overall lower cost of entry. Our approach is simple and repeatable.

## HOW WE DO IT OUR METHODOLOGY

*We are not just Intelligent Automation Developers! In other words, we do not just build your automations and drop them at your door. CampTek Software is a full life cycle Managed Service provider that offers an array of Services based on your current and future requirements and can tailor hybrid solutions that you can take advantage of.*

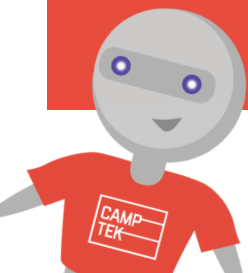
*Scan our QR code to learn more about our Full Lifecycle Managed Services:*



## WHY AVIA?

AVIA is the leader in moving technology forward in the healthcare space. We've partnered with them to accelerate your automation needs with white glove full lifecycle managed services. Much like AVIA, our mission is to get you the highest return on your investment in technology by automating highly repetitive tasks in Revenue Cycle, Insurance Verification and so much more. Our developers are experts in their fields and work hand in hand with you and our project teams to deliver stable, scalable automations quickly and efficiently.

*Scan our QR code to see our case studies in EPIC, Availity, Cerner, eCW and more:*



[WWW.CAMPTEKSOFTWARE.COM](http://WWW.CAMPTEKSOFTWARE.COM)



**UiPath Certified**  
PROFESSIONAL SERVICES