

Advanced medical API for your unique healthcare needs

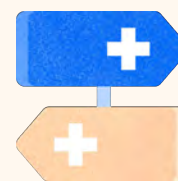
Leverage the power of Infermedica's AI-driven technologies,
and build custom solutions for your healthcare challenges.



Create unique solutions that can



- Collect users' current symptoms
- Collect users' medical histories
- Assess symptoms in minutes



- Calculate the most probable conditions
- Recommend triage levels
- Navigate users to the right level of care



- Link users with your medical services
- Transfer users data to physicians
- Improve data completion in users records

Add them to your

✓ Chatbots

✓ Call centers

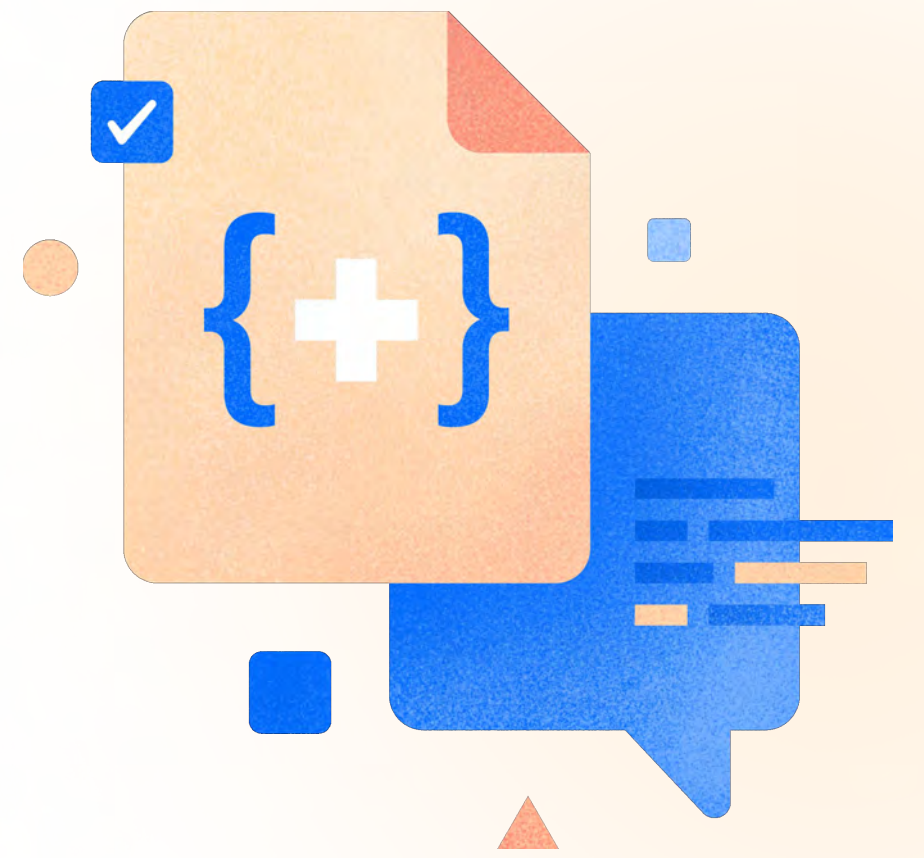
✓ Voice assistants

✓ Telemedicine tools

✓ Medical apps

✓ Symptom checkers

✓ Member portals



Single API, multiple healthcare benefits

- ✓ Simplify user navigation
- ✓ Reduce providers burnout
- ✓ Improve user satisfaction
- ✓ Increase capacity
- ✓ Centralize data
- ✓ Reduce costs

Infermedica API: an intelligent core you can trust

Infermedica API provides convenient access to proven medical technologies crafted by world-class physicians and engineers. Use our solutions to build the next generation of digital health experiences.



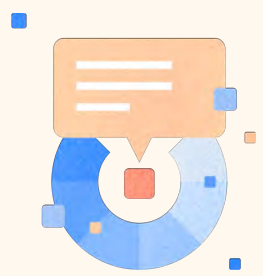
Inference Engine

- ✓ Real-time symptom assessment
- ✓ Dynamic scenarios, no fixed paths
- ✓ **94%** engine accuracy



Medical Knowledge Base

- ✓ **2,800+** medical concepts
- ✓ Adult and pediatric coverage in **24+** languages
- ✓ **110K+** hours of clinician validation



Natural Language Processing

- ✓ Analyzes users messages
- ✓ Recognizes common names of medical terms
- ✓ Ready for your conversational interfaces

Learn more about Infermedica's technologies

infermedica.com