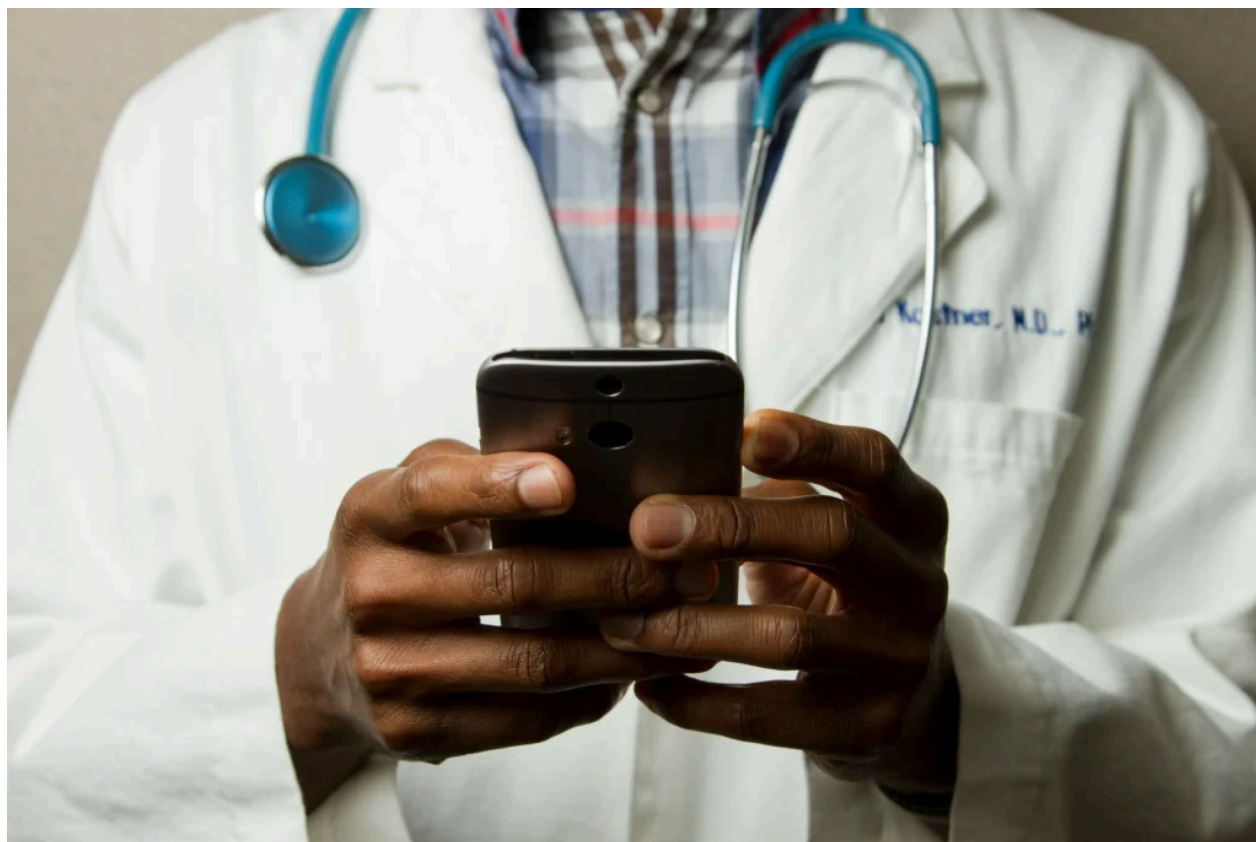


[Book A Call](#)[Try For Free](#)

AI Medical Scribe vs Human Scribe – A Complete Comparison

/ Blog / By Emily Goyal



Introduction

The healthcare industry is rapidly evolving, and documentation has become one of the most time-consuming tasks for physicians. Human medical scribes have played a vital role in recording patient encounters and managing medical notes, however, human error can result in incomplete records and can lead to various issues. Accurate documentation ensures better patient outcomes, reduces medical errors, and supports insurance billing, making precision in note-taking vital. **AI medical scribes** are now capable of accurate and more efficient medical scribing now. Medical documentation has evolved from unsustainable handwritten

notes to **EHRs** and now to AI scribe systems that have real-time, accurate, automated note generation.

What Is a Human Medical Scribe?

A human medical scribe assists healthcare providers by documenting patient encounters in real time. Their tasks include:

- Recording patient histories, symptoms, and findings
- Updating EHRs
- Managing orders, referrals, and follow-ups

By handling clerical work, scribes allow physicians to focus more on the patient, not the computer. This improves patient engagement and clinical efficiency. However, common challenges with human scribes are that they can be costly, inconsistently available, and prone to human error.



What Is an AI Medical Scribe?

An AI scribe is an intelligent digital assistant designed to automate medical documentation. Using speech-to-text and natural language processing, it listens to physician patient interactions, processes the data, and generates accurate clinical notes. **AI scribes** can record conversations, convert speech to text, and extract structured information (diagnoses, symptoms, medications). The notes are then formatted into EHR-ready summaries.

Key Differences Between AI and Human Scribes

Accuracy and Consistency

A 2025 study (*Assessing the Quality of AI-Generated Clinical Notes*) found that AI-generated notes scored 4.20/5, nearly matching human quality (4.25/5). This proves that AI medical scribing tools now deliver near-human accuracy at scale.

Efficiency and Speed

AI scribes for doctors can create draft notes within minutes compared to 15–30 minutes for human scribes. This efficiency significantly reduces after-hours charting.

Cost and Scalability

AI subscriptions cost around \$99–\$299/month per provider, compared to \$40,000+ annually for human scribes. Practices using AI scribes report up to 70% cost savings within the first year.

Data Security and Privacy

AI systems are **HIPAA-compliant**, though they require careful vendor selection to mitigate data privacy risks. Even with automation, clinicians must review **AI-generated notes** before final submission, ensuring compliance and accuracy.

Availability and Reliability

AI systems don't need breaks or scheduling, making them available all the time.

[Read the Related Article: AI Medical Scribe: The Complete Guide for Doctors and Healthcare Providers](#)

Benefits of Using an AI Medical Scribe

AI medical scribes help **reduce physician burnout**, lower operational costs, and improve efficiency. **AI scribe** systems automate repetitive documentation and real-time transcription allows clinicians to close notes immediately boosting productivity and patient throughput and giving physicians more time to focus on patient care and reducing fatigue. With subscriptions to AI medical scribes being cheaper than a salary for a human one, **AI medical scribing** drastically reduces administrative costs. As mentioned, **AI scribes** integrate directly into EHR platforms, further improving efficiency and making doctors' jobs easier.

Advantages of Human Medical Scribes

Human scribes excel in understanding emotional tone, context, and nuanced language that AI might have trouble understanding and could misinterpret. Humans can adapt quickly, ensuring contextually appropriate documentation even in unusual or complex medical cases. Human interaction fosters trust and comfort in the important subject of someone's health, especially in sensitive specialties like psychiatry or pediatrics.

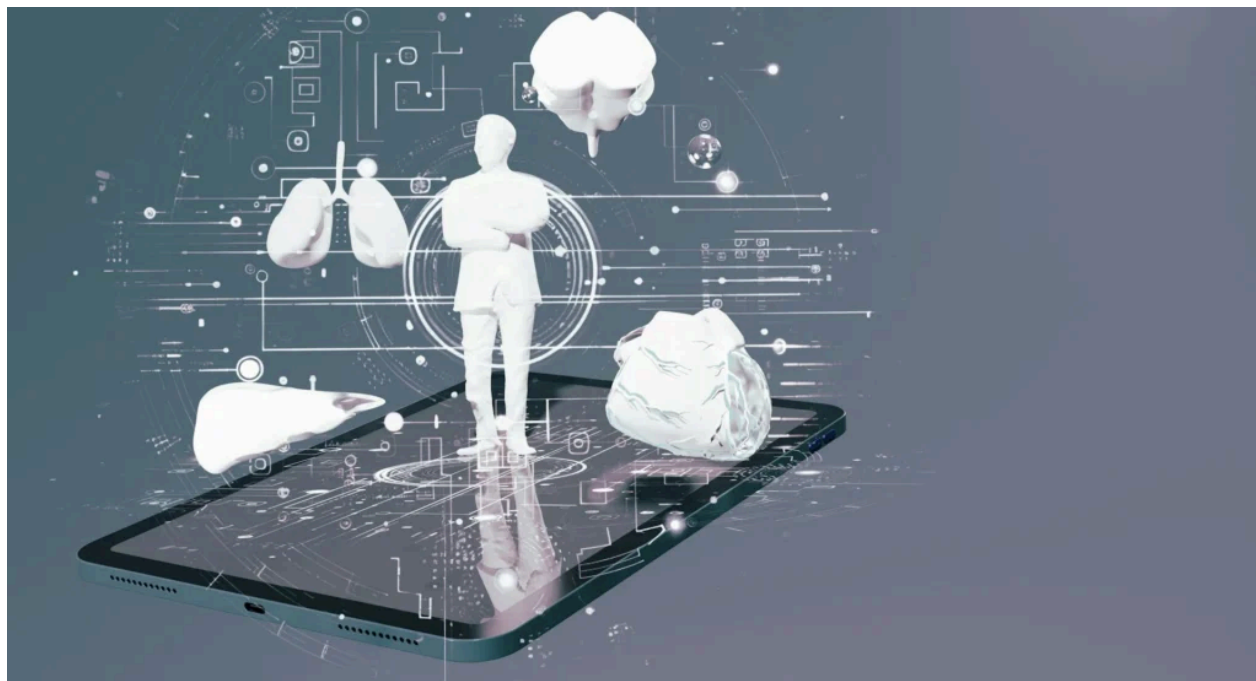
Which One Is Better for Your Practice?

Small Clinics vs Large Hospitals

Small clinics benefit from cost-efficient, cloud-based AI scribe for doctors solutions. Bigger hospitals prefer hybrid setups combining **AI automation** and **human review**.

Specialty-Based Recommendations

Primary Care uses AI scribes for routine documentation. Psychiatry likes to use human scribes for empathy and nuance. Emergency Medicine uses hybrid models for speed and reliability.



How AllayAI Helps

- **Built for doctors, trusted by doctors:** Designed with healthcare providers' needs at the core.
- **Real-time multilingual translation:** Breaks communication barriers with diverse patients.
- **Automated coding & billing:** Handles ICD-10 and HCC coding instantly, reducing claim denials.
- **Customization for provider preferences:** Flexible enough to adapt to individual workflow styles.
- **Saves up to 20–25 minutes per patient.**
- **Improves communication with non-English-speaking patients.**
- **Enhances work-life balance and reduces after-hours charting.**

This makes **AllayAI** one of the **best AI medical scribe** tools for today's practices.

"AllayAI has replaced my need for an in-person scribe. I'm impressed with how well AllayAI arranges all relevant information into a well organized documentation. And the process to transfer it straight into the electronic medical record is simple and efficient." -Brian Hopkins, MD, Urologist Walnut Creek, CA

AllayAI is able to completely replace a human scribe or integrate in a hybrid format seamlessly.

The Future of Medical Scribing

AI medical scribing using generative models will enhance contextual understanding, predictive analytics, and multilingual transcription further evolving medical scribing practices..

Conclusion

AI scribes are fast, affordable, and consistent, while human scribes provide emotional intelligence and context. AI scribes for doctors are the ideal solution for most modern clinics. For most healthcare providers, implementing an AI scribe offers substantial benefits such as reduced burnout, lower costs, and improved efficiency.

[← Previous Post](#)

[Next Post →](#)

[Home](#)

[Get Started](#)

[Terms Of Use](#)

[Privacy Policy](#)

[Blog](#)

[Contact Us](#)

Copyright © 2025 AllayAI-All Rights Reserved