



## Smartlink Data Connector (SDC)

### Healthcare Remains Filled with Islands of Data

Despite the billions of tax dollars invested in the roll out of Electronic Health Records (EHRs), few systems can talk to one another and healthcare remains an ocean filled with islands of data. EHR integrations are expensive, time consuming, and always limited by the data exposed by the vendor.

### The User Interface IS an Interface

Smartlink Data Connector (SDC) solves this problem by integrating with EHRs and other health IT systems via the user interface (UI). Just like a remote user, SDC logs into an EHR and extracts or inserts virtually any type of data. It integrates with any EHR regardless of operating environment (SaaS, hosted, on-premise), takes just days or weeks to complete, and isn't limited by vendor specific API and HL7 capabilities.

### Bypassing EHR Integration Limitations

SDC is an Integration Platform as a Service (iPaaS) solution that can integrate health IT systems via traditional methods such as API, HL7, and database, but what makes it unique is its ability to integrate via the UI. It evolved out of twenty-five years and fifty million dollars of investment to develop a universal approach to integrating complex systems in other industries. This 3rd generation solution is designed to overcome the inherent limitations and complexities of traditional EHR integration methods, and enable the fluid exchange of data between healthcare systems.

*"The complexity of the DCHIE project called for a tool that I call an interpreter. It had to speak multiple different languages and yet be able to share the information. Data Connector ultimately eliminated the excuse of 'I can't share data because I don't have that level of technology.'"*

**Antwanye Ford, President & CEO**  
Enlightened, Inc., Grant Award Prime,  
DCHIE

### Benefits of Smartlink Data Connector

#### FAST



**Bidirectional data  
exchange in weeks**

#### FLEXIBLE



**Any data,  
any system**

#### COMPLETE



**No vendor or  
clinic involvement**

## Eliminate the Human Capital Necessary for Traditional Integrations

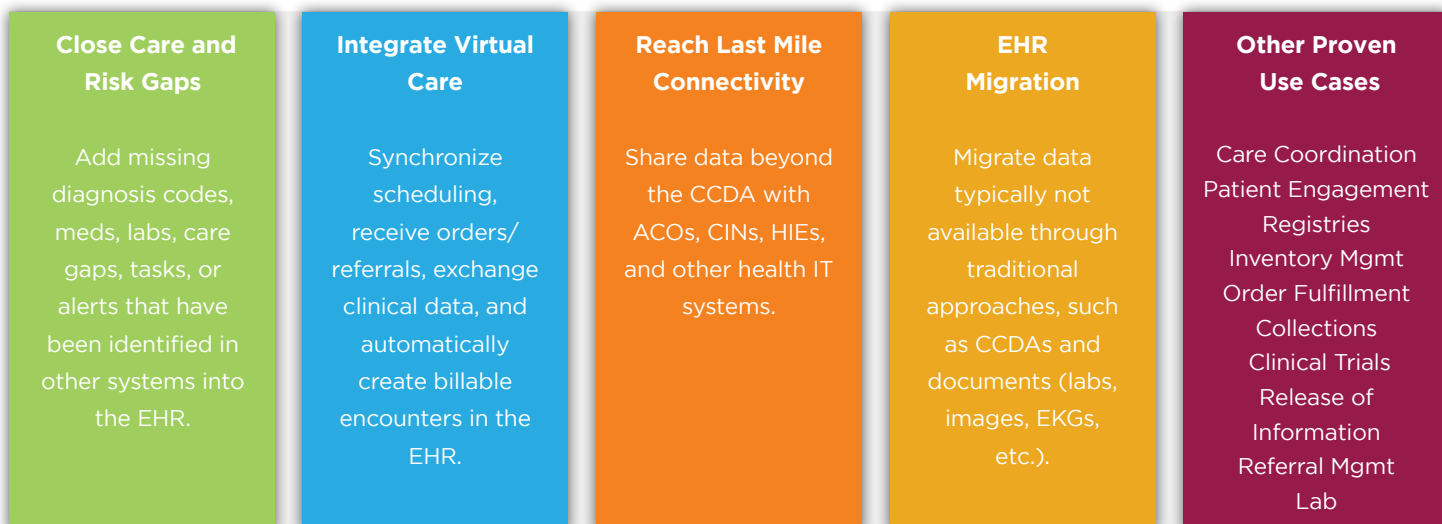
By leveraging the UI, SDC eliminates the layers of interoperability and human capital typically required for integration projects. Once SDC has been configured with access to the EHR system, data can start flowing in a matter of days or weeks, at a fraction of the time and total cost of traditional backend integrations. The solution resides entirely in the cloud, and does not require any local software installation. Plus, because SDC is leveraging the user interface, there is a complete audit trail of its activity.

## Examples of Shared Data

CCDA/CCD  
Discrete Data  
Images and Documents  
Financial Data  
Chart Notes

Patient Schedules  
Alerts, Tasks, and Notifications  
Lab Orders and Results  
Referrals  
Non-MU Data (e.g. Dental, Behavioral)

Below are just a few examples of how SDC is helping to improve clinical and financial outcomes:



With SDC, healthcare organizations can finally achieve the level of interoperability necessary to succeed under value-based payment models, without large investments of human capital, time, and money.

Visit [smartlinkhealth.com](https://smartlinkhealth.com) to learn more or email [info@smartlinkhealth.com](mailto:info@smartlinkhealth.com) to schedule a pilot.