

Home Smart Clinic Blueprint and Category

Telehealth has yet to deliver on the promise of virtual care. Current solutions – chat, phone, and video options – are simply not comprehensive enough for clinicians to provide accurate diagnoses from afar.

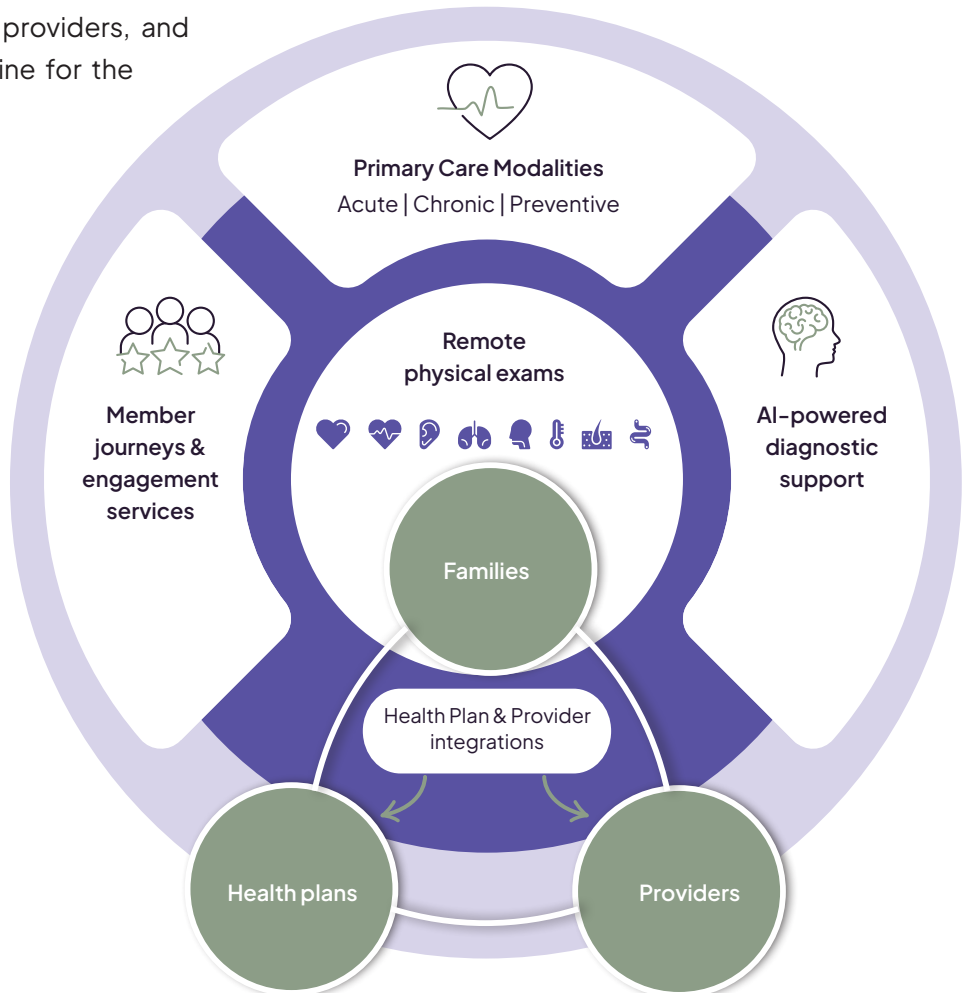
We believe that if clinicians are equipped with best-in-class remote insights and provided with accurate snapshots of patients' unique state of health, then remote doctor visits from a patient's living room can be equally as effective as visits from the clinical setting.

This is why we created the Home Smart Clinic, a new category of care designed to resolve the Home Health Delivery Gap™. The Home Smart Clinic allows clinicians to perform remote physical exams from the home, making way for high-quality primary care without compromises. Regardless of where the patient is or what condition they have – acute or chronic – the Home Smart Clinic elevates the home, turning it into an integral and equitable place for primary care consumption. Simultaneously, TytoCare has created the Pro Smart Clinic, extending the reach of the Home Smart Clinic into other areas outside of the home, like schools, work environments, and care facilities.

To help fulfill the promise of virtual care and provide the best possible care in the home, we developed the Home Smart Clinic Blueprint.

The blueprint empowers health plans, providers, and families by serving as a basis and outline for the Home Smart Clinic solution.

The Home Smart Clinic Blueprint





Remote physical exams



TytoCare's FDA-cleared handheld solution empowers clinicians with the ability to conduct high-quality medical exams remotely. The TytoCare solution allows clinicians to make accurate diagnoses based on real patient data, as opposed to guessing patients' conditions from phone calls and video chats. The TytoCare device can accurately listen to heart and lung sounds, look into the ear canal and throat, and measure blood pressure, blood oxygen levels, weight, and more.



AI-powered guidance and diagnostic support

TytoCare uses substantial amounts of continuously aggregated and anonymous clinical and usage data to drive its AI-powered guidance and diagnostic support capabilities. On the patient level, the AI technology guides patients during self-exams, helping them place the device's modular tips (stethoscope, otoscope, etc.) in the right locations and at the correct angles to accurately capture health data. The AI-enabled diagnostic support capability then analyzes the gathered data and supports clinician diagnoses, detecting conditions such as tonsillar exudates, lung wheezes, crackles, and more.



Primary care modality enabler

TytoCare supports primary care providers by offering all care modalities, allowing for more focused care. These modalities include:

Acute care - providing rapid care for common, acute conditions.

Chronic condition management - enabling patients to track their medical conditions outside of the clinic on a regular, ongoing basis.

Preventive care - keeping patients' health from declining over time by offering illness prevention and decreasing the dangers and risks of diseases.



Health plan and provider integrations

TytoCare's software connectors allow for streamlined integrations with customer systems, including Electronic Health Records, proprietary virtual-first mobile apps, and more. TytoCare also supports a variety of provider models, including doctors in the cloud, community PCPs, or your own providers.



Home Health Delivery Framework™

The home health delivery paradigm shift enabled by the Home Smart Clinic requires some behavioral change by clinicians and families in order to succeed. Using years of experience, knowledge from successful deployments with partners across the globe, and behavioral science insights, we have created the Home Health Delivery Framework™, a holistic suite of user engagement services that provide partners with the required building blocks for successful deployment and adoption of the TytoCare Home Smart Clinic.

