

1
Sign up for a
Connected
Mind account

2
Download the App
to a tablet

3
Hand the tablet
to patient and start
screening mental
health today

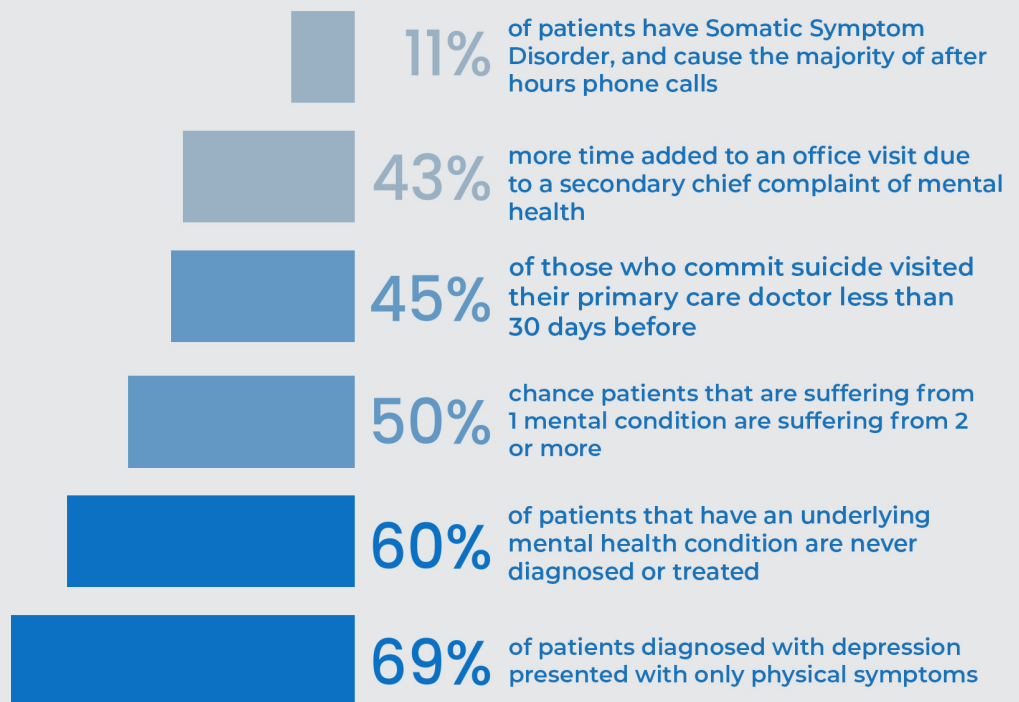
Save patients and time.

Connected mind replaces traditional mental health screening by screening for 6 comorbid conditions simultaneously. For most people the screening takes less than a minute. When triggered, it builds a personalized screening for just what is indicated. When the screening is complete, you're given a mental health profile of the patient, so you know what areas to treat or refer. The screenings work on a tablet or over telemedicine, and are billable to insurance.




1 in 5 patients are suffering
from a mental health condition.

Screening your patients on a regular basis for multiple mental health conditions improves patient care and saves you time



Depression



60

Very Severe


Standard Results

- MDD: Criteria Met
- PDD: Criteria Met

Factors

- alcohol or drugs
- illness or physical problems
- life events or bereavement

Anxiety



39

Severe


Standard Results

- Criteria Met

Factors

- alcohol or drugs
- illness or physical problems

ADHD



-


Combined

PH - Severe PI - Severe

Standard Results


- PH Criteria Met - Severe
- PI Criteria Met - Severe

Consistency Score



5

Substance Use Disorder




18

Severe

Standard Results

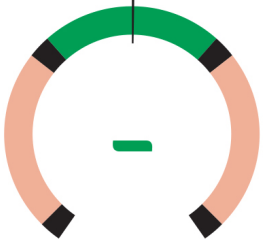
- Criteria Met - Severe

Consistency Score



0

Bipolar Disorder



-


Criteria Not Met

Standard Results

- BPD-I: Criteria Not Met
- BPD-II: Criteria Not Met

Factors

Somatic Symptom Disorder



25

Severe

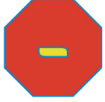
Standard Results

- Criteria Met - Severe
- With Predominant Pain
- Persistent

Factors

- patient shared symptoms
- doctor provided explanation

Suicidality



-

Ideation: thoughts of death more than half the days in the last 2 weeks / thoughts of their own death

Risks: thoughts of suicide / no past suicide attempts / not affected by the suicide of another

Plan: plan to harm themselves or commit suicide

Intent: intent to harm or kill themselves