

PRIOR AUTHORIZATION REQUEST



RPA SaaS Provider



EPIC, MAGELLAN, UHC, EVICORE OVERVIEW

This automation logs into Epic and selects patients based on specific criteria to submit prior authorization requests through the appropriate provider. The automation completes these tasks by inputting a note on the patients page.

READ OUR CASE STUDY

WWW.CAMPTEKSOFTWARE.COM/REVENUE-CYCLE-PRIOR-AUTHORIZATION-CASE-STUDY/

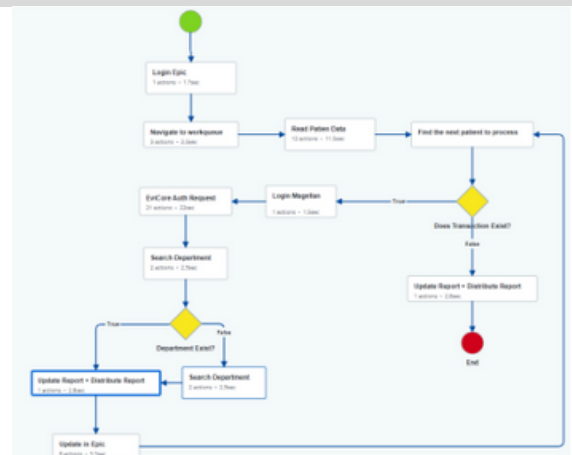
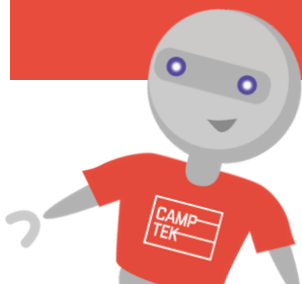
THE SPECIFICS AUTH CRITERIA

- Select specific work queue in Epic.
- Identify patients based on status and coverage.
- Extract CPT code and patient specifics.
- Download Referral Report.
- Extract details from signed request in the patient chart.
- Based on coverage: open Magellan, UHC or EviCore.
- Complete submission using mapping documents for auth location, supporting document submissions, and Physician information.



IT'S IN THE DETAILS

Your bot automations success relies on your ability to clearly define all business rules and exceptions. No matter how small, the bot will do it all!



WWW.CAMPTEKSOFTWARE.COM



UiPath Certified
PROFESSIONAL SERVICES