

# Early symptom assessment and triage module

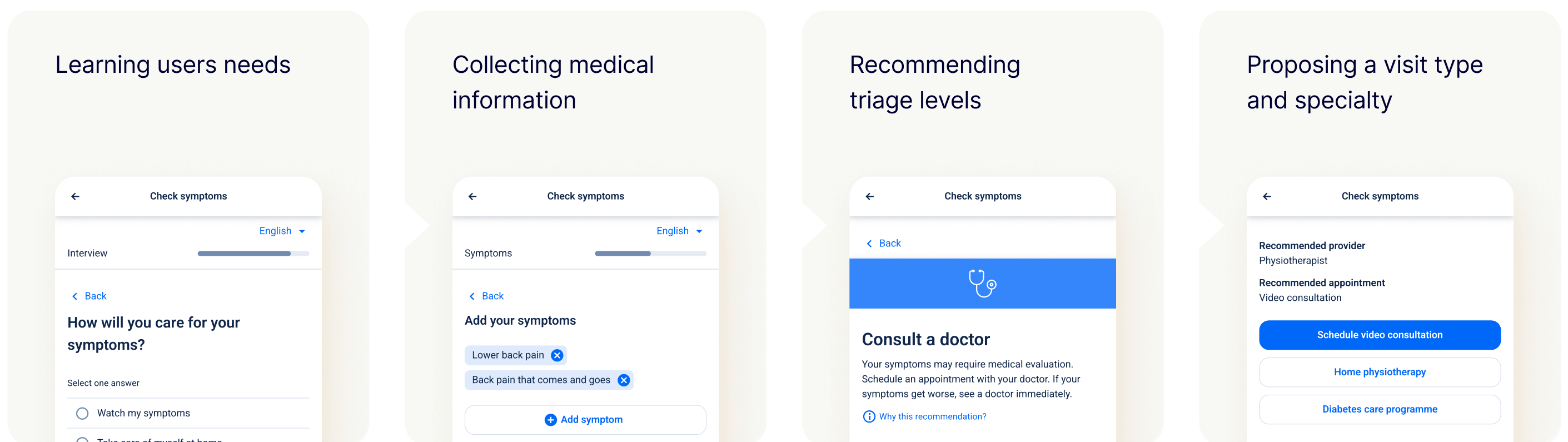
Infermedica Triage is a ready-to-use solution for healthcare providers, insurers, and telemedicine companies. Use it to analyze users symptoms, understand their needs, and connect them with the right medical services early on.



## 1. Triage can be enabled on your:

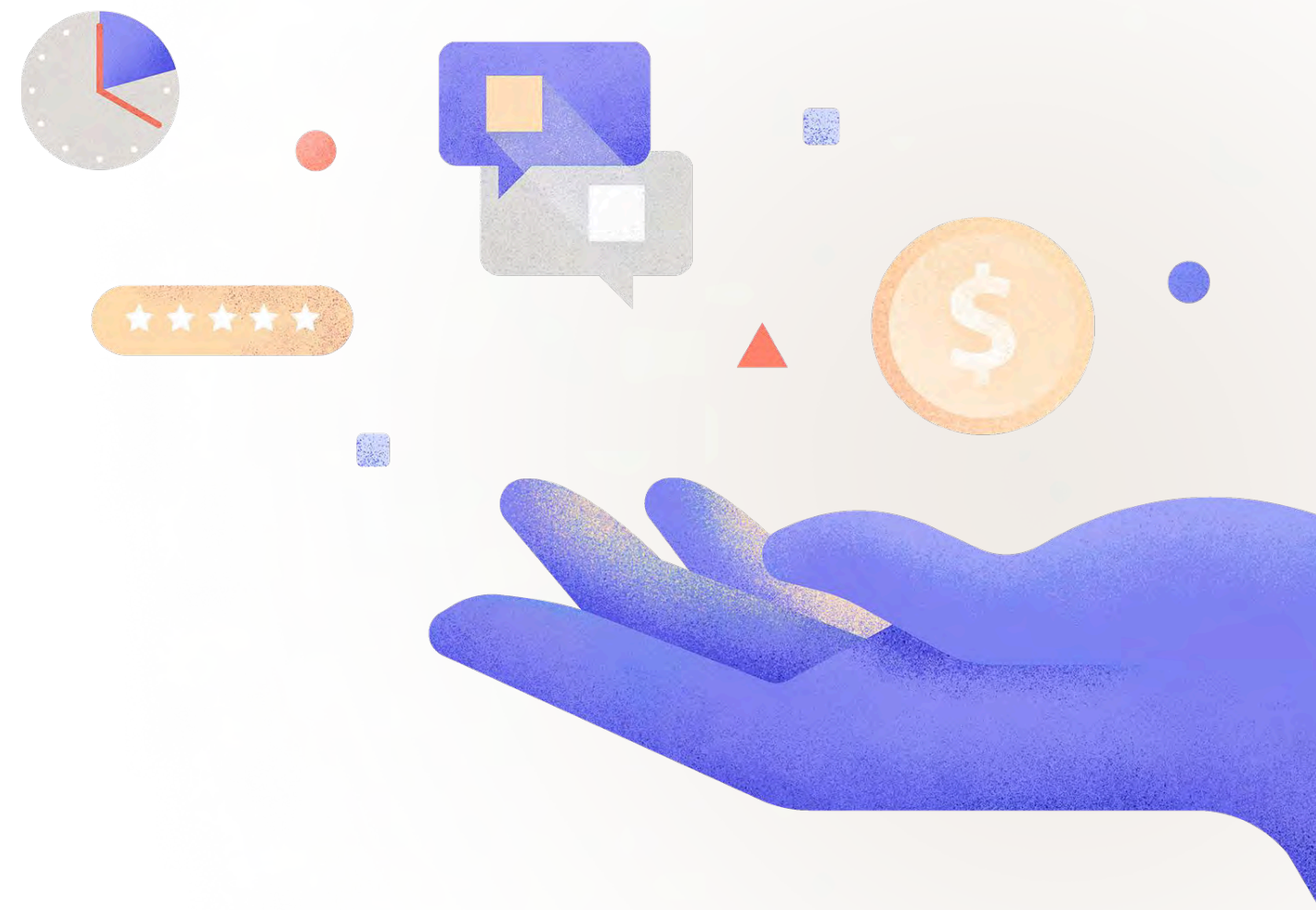
- ✓ Websites and banners
- ✓ Member portals
- ✓ Mobile app's features

## 2. Triage engages with patients by:



## 3. Triage connects patients with the services they need:

- ✓ Call center support
- ✓ Telehealth and telemedicine
- ✓ Booking systems
- ✓ Information resources



# Benefits of pre-visit symptom assessment

- ✓ Improved user experiences
- ✓ Shortened wait times
- ✓ Fewer unnecessary visits
- ✓ Centralized data
- ✓ Lower costs
- ✓ Reduced staff burnout
- ✓ Better telemedicine uptake

## Developed by experts from Infermedica

We continuously develop tools for early symptom assessment and digital navigation to make healthcare more accessible, convenient, and affordable for all.

20M+

checkups performed

120K+

hours of physician input

94%

engine accuracy

- 

Quality Management System certified with PN-EN ISO 13485:2016
- 

Processes and Development Procedures certified with ISO 27001:2017
- 

Compliant with standards for patient data protection
- 

Compliant with the General Data Protection Regulation
- 

System and Organization Controls 2® Compliant